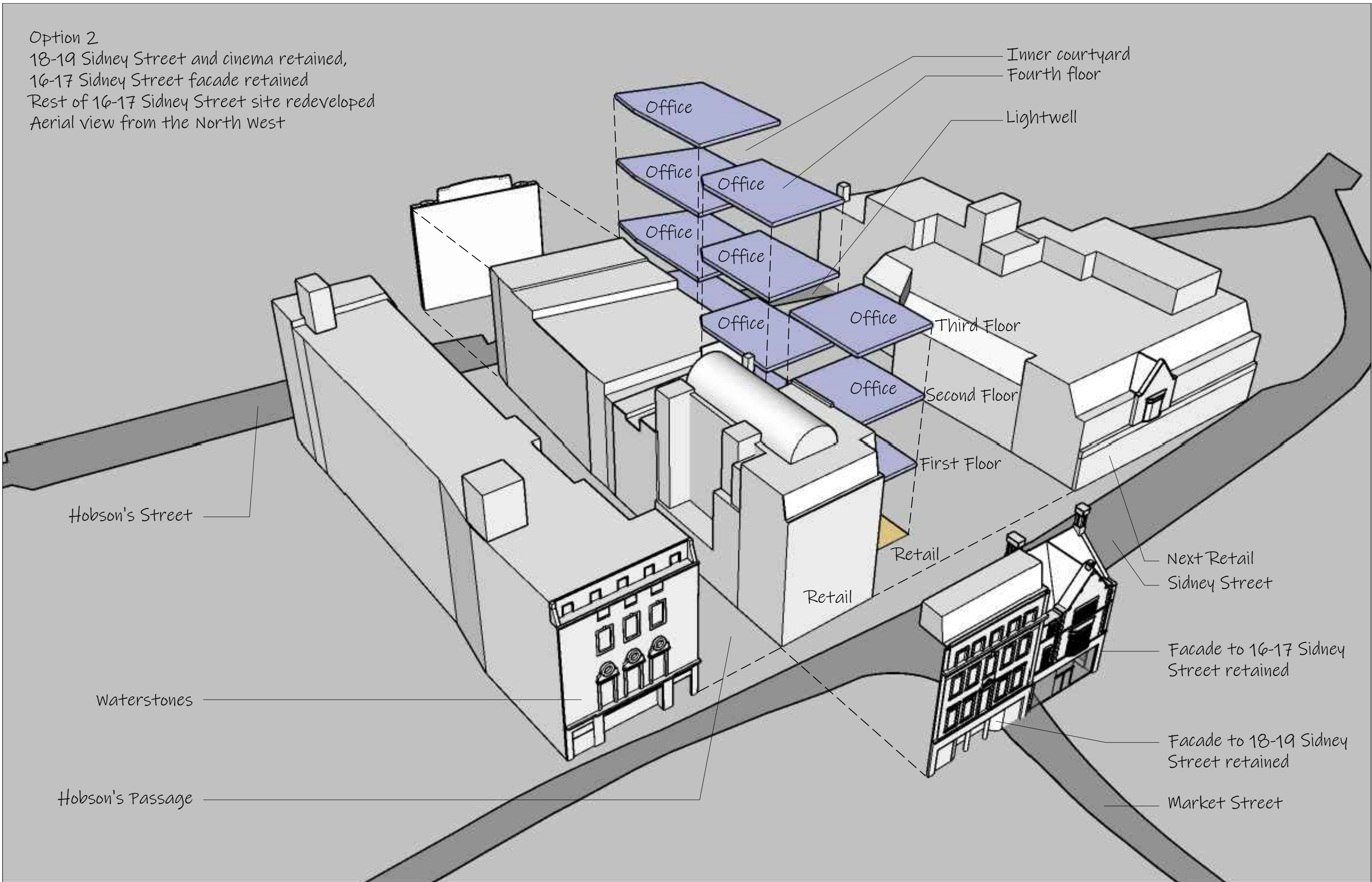


Option 2
18-19 Sidney Street and cinema retained,
16-17 Sidney Street facade retained
Rest of 16-17 Sidney Street site redeveloped
Aerial view from the North West



Inner courtyard
Fourth floor

Lightwell

Office

Office

Office

Office

Office

Office

Office

Third Floor

Office

Second Floor

First Floor

Retail

Retail

Next Retail
Sidney Street

Facade to 16-17 Sidney
Street retained

Facade to 18-19 Sidney
Street retained

Market Street

Hobson's Street

Waterstones

Hobson's Passage



Next Retail

Office

Office

Office

Office

Office

Office

Office

16-17 Sidney Street facade retained

18-19 Sidney street retained and refurbished

Sidney Street

Cinema retained for leisure/community use

Waterstone's

Cinema retained

Option 2
18-19 Sidney Street and cinema retained,
16-17 Sidney Street facade retained
Rest of 16-17 Sidney Street site redeveloped
Aerial view from the North East

Hobson Street

Hobson Passage



16-17 Sidney Street new
Hobson Street facade

Cinema retained

Hobson's
Passage

AA

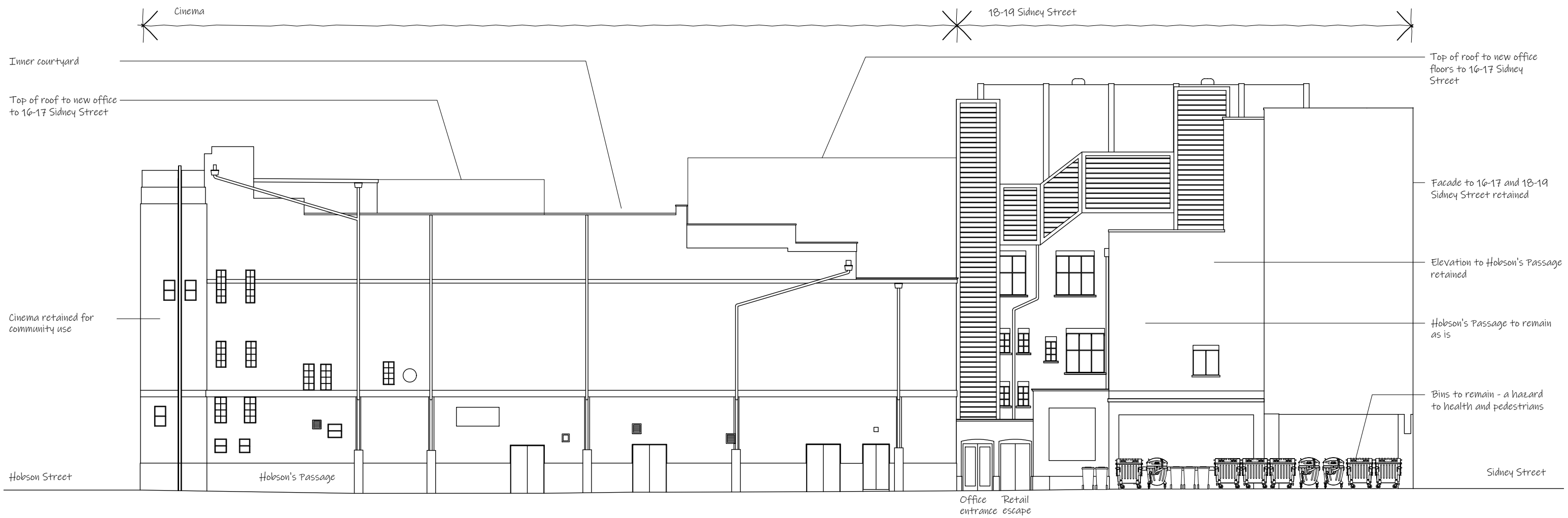
BB

Extent of basement

Elevation to Hobson Street

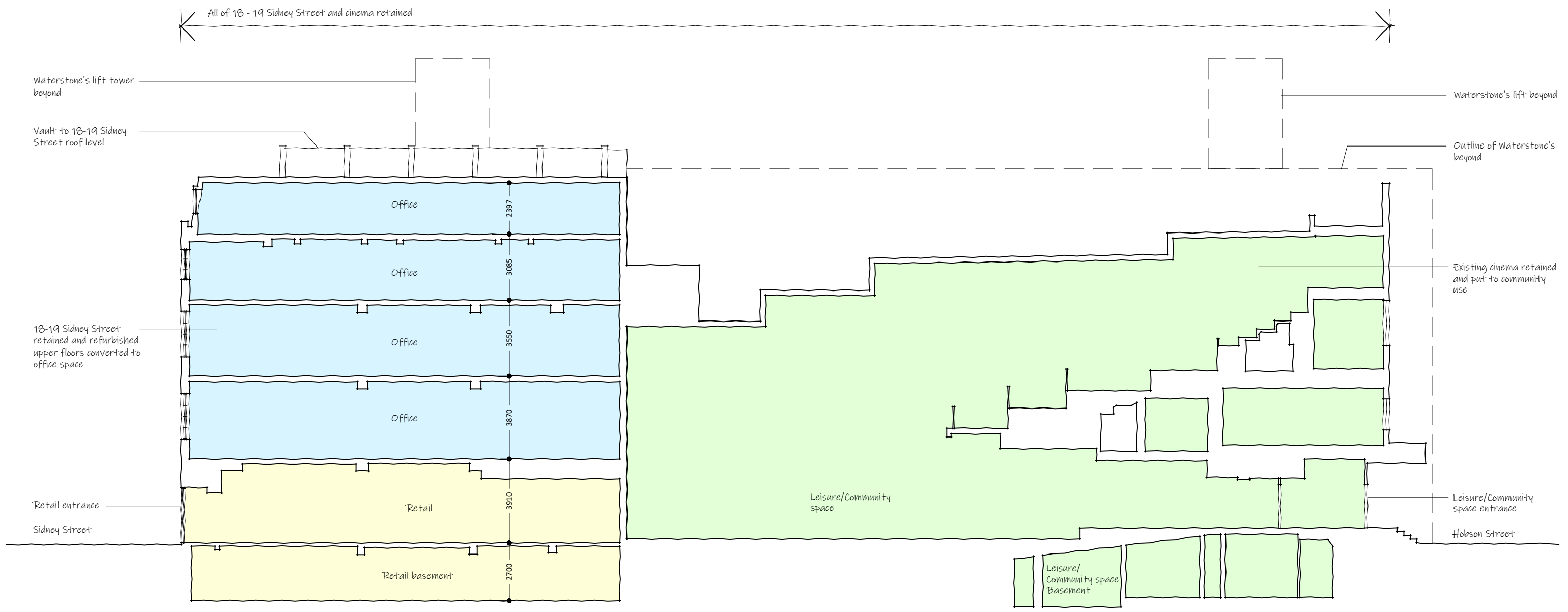
Option 2
18-19 Sidney Street and cinema retained,
16-17 Sidney Street facade retained
Rest of 16-17 Sidney Street site redeveloped
Aerial view from the South East

Option 2
 18-19 Sidney Street and cinema retained,
 16-17 Sidney Street facade retained
 Rest of 16-17 Sidney Street site redeveloped
 Aerial view from the South East



ELEVATION to Hobson's Passage

Option 2
 18-19 Sidney Street and cinema retained,
 16-17 Sidney Street facade retained
 Rest of 16-17 Sidney Street site redeveloped
 Aerial view from the South East



LONG SECTION "AA" THROUGH 18 - 19 SIDNEY STREET